

Maajii-Ojibwemowag
(They Begin to Speak Ojibwe)

Manoominikeyaang



Stories of the Plants:
A Zhaawanong Book



Dagwaagin.
Our family is enjoying manoomin we harvested.



Manoomin was one of the things we harvested in the fall,
along with other awesiinyag.

My parents taught us many things,
like makizinikewin and manoominikewin.



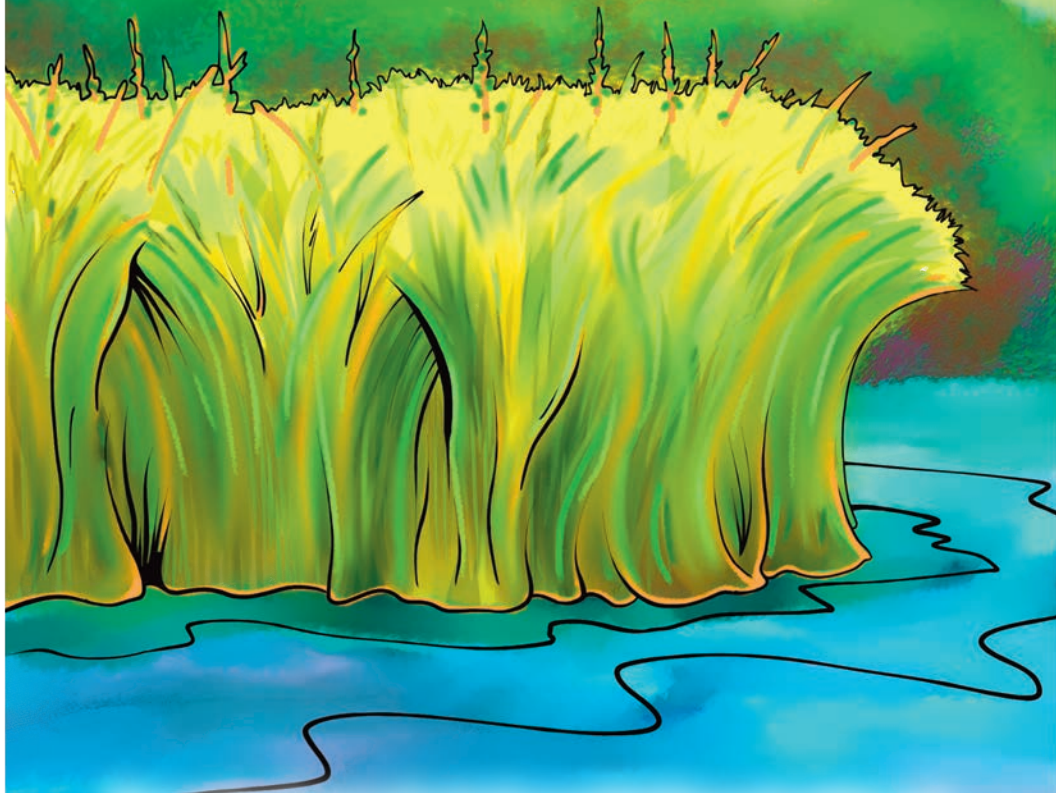
My mom taught us it was important
to continue our traditional practices as Anishinaabe.

Ningitziimag loved to harvest manomin together.



They knew all of the best places to manominikewin.

Manoomin grows in many places
throughout Anishinaabe country.



It can be harvested along Gichigami, ziibiwan,
and other zaaga'iganan.



My mother taught me to make manoomin
bawa'iganaatigoon and gaandakii'iganaak.



We were taught to always manoominikewin in a jiimaan, respectfully, by first biindaakoojigewin.



The first time niwiiw and I went manoominikewin,
we took the knockers and push pole I made
and used nimaamaa's canoe.



We manoominikewin like my mother and father,
my mother bawa'am and nimbaabaa pushing the canoe.

While my wife and I manoominikewin,
I could not push our canoe well.



Chi-noodin and it pushed our canoe out into the zaaga'igan!

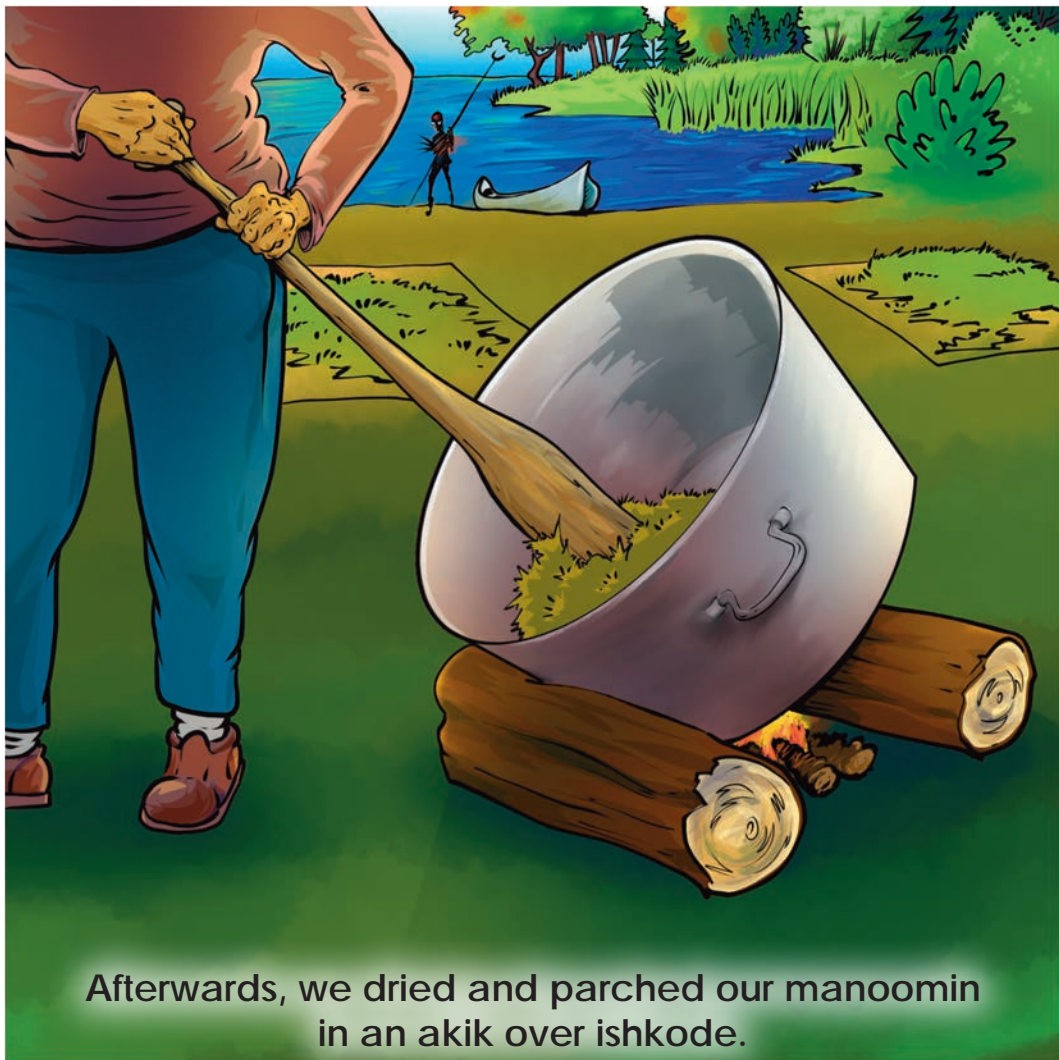
We circled the zaaga'igan
to get back to the manoomin beds.



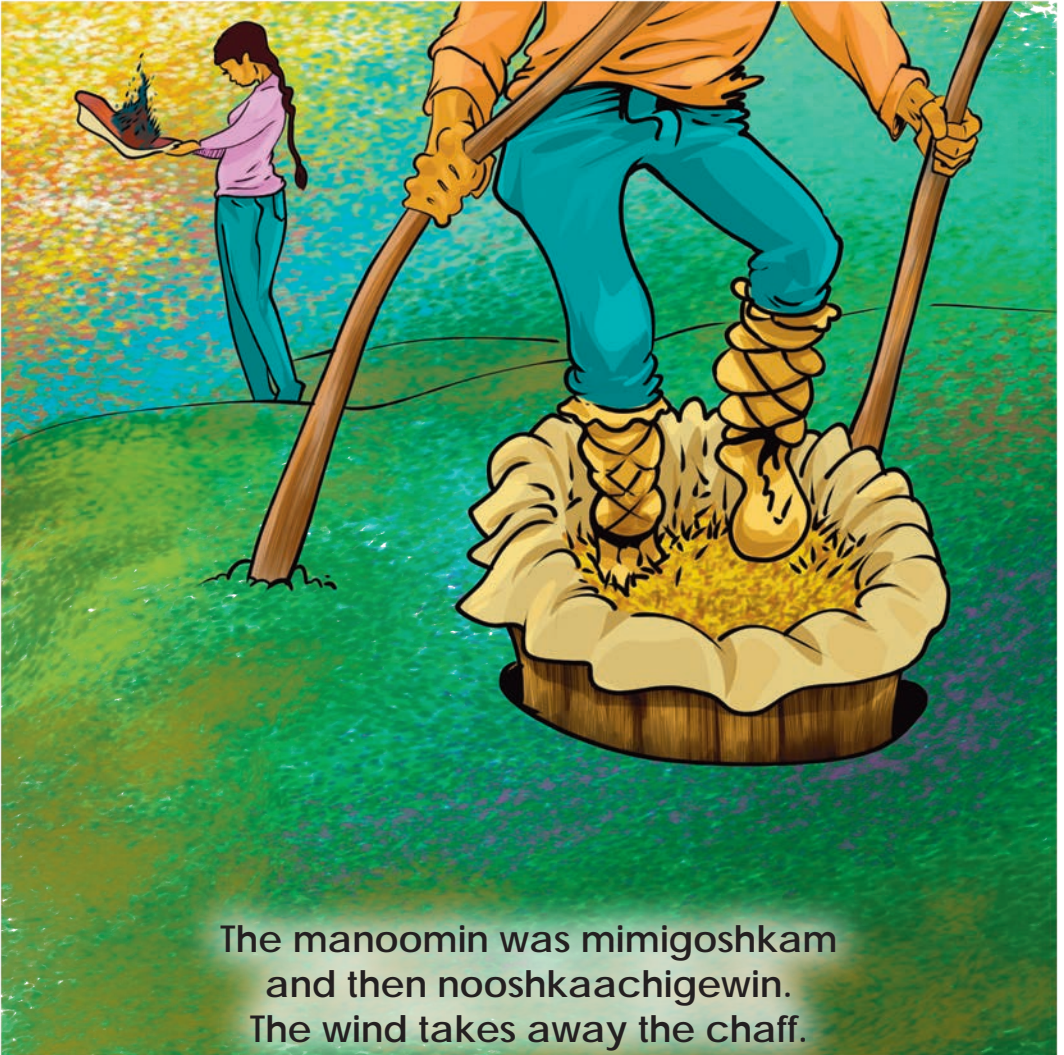
My wife, gii-agadendaagozi!



We made it back to the manomin beds without tipping our jimaan and losing our manomin.

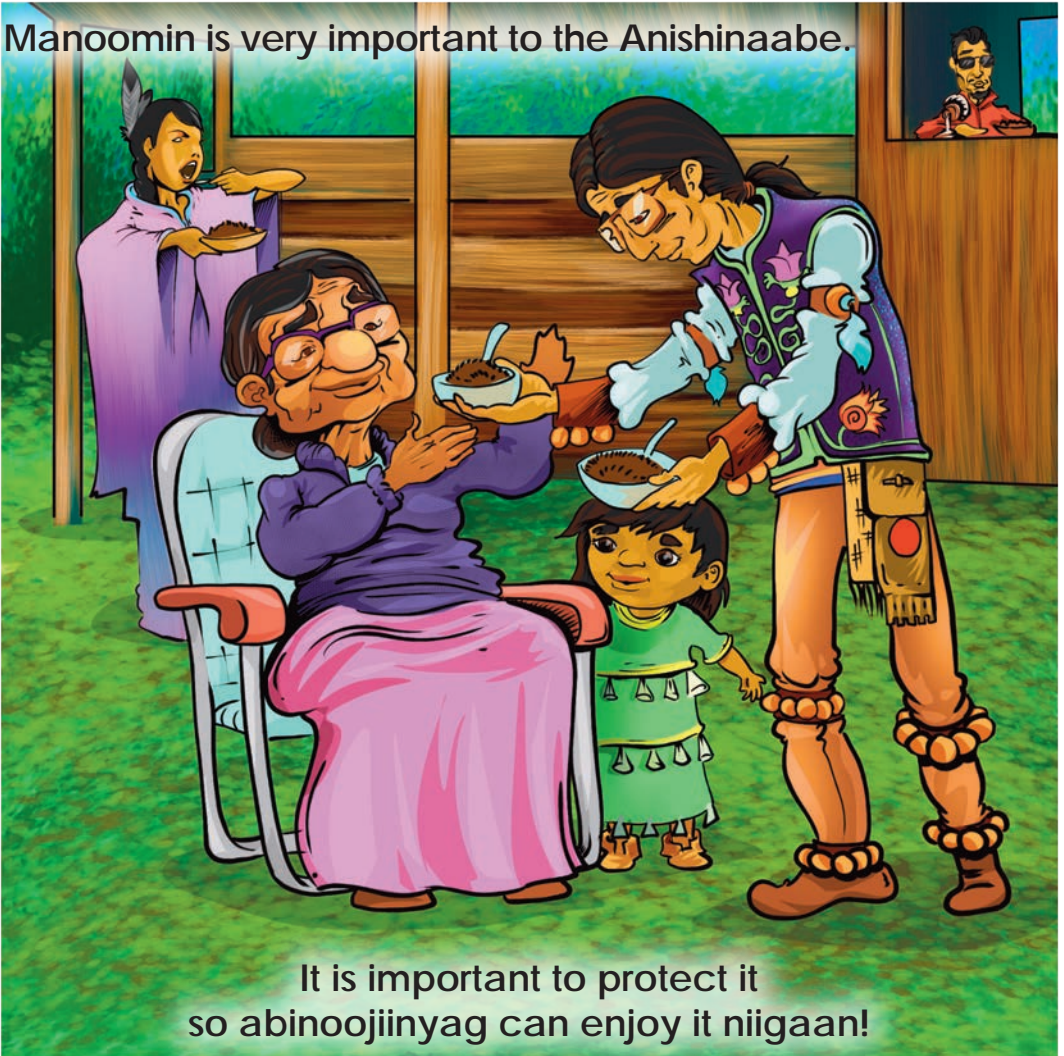


Afterwards, we dried and parched our manomin
in an akik over ishkode.



The manoomin was mimigoshkam
and then nooshkaachigewin.
The wind takes away the chaff.

Manoomin is very important to the Anishinaabe.



It is important to protect it
so abinoojiinyag can enjoy it niigaan!



Maajii-Ojibwemowag (They Begin to Speak Ojibwe)



Zhaawanong Book Set:
Stories of the Plants



Tribal Storytellers -

Anabiikwe (Cleo White) ~White Earth Nation

Mezinaanakwad (Dennis White)

~Lac Courte Oreilles Band of Lake Superior Chippewa

Illustration and Layout - Niiyogizhig (Wesley Ballinger)

~Mille Lacs Band of Ojibwe

Language/Outreach Specialist - Gizhibaawaanakwadook (Misty Peterson)

~Fond du Lac Band of Lake Superior Chippewa and Ontario First Nation, Couchiching

Intermedia Web Design and Layout - Melissa Maund Rasmussen

Project Director - Animikii Ikwe (LaTisha Coffin)

~Bad River Band of Lake Superior Chippewa

<https://glifwc-inwe.com>





<https://glifwc-inwe.com>



This publication was funded through a grant from the Administration for Native Americans (ANA), ACF, U.S. Department of Health and Human Services.